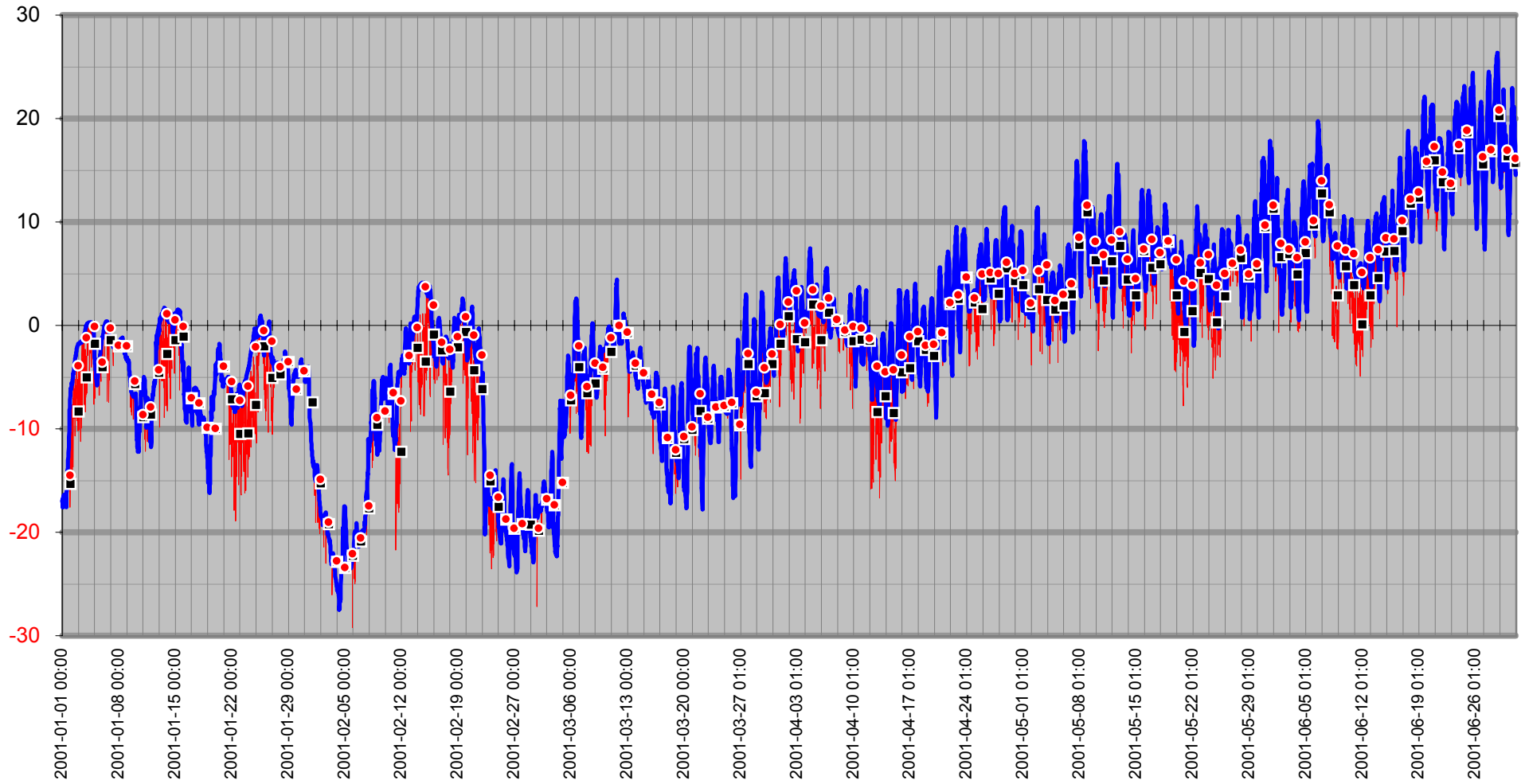


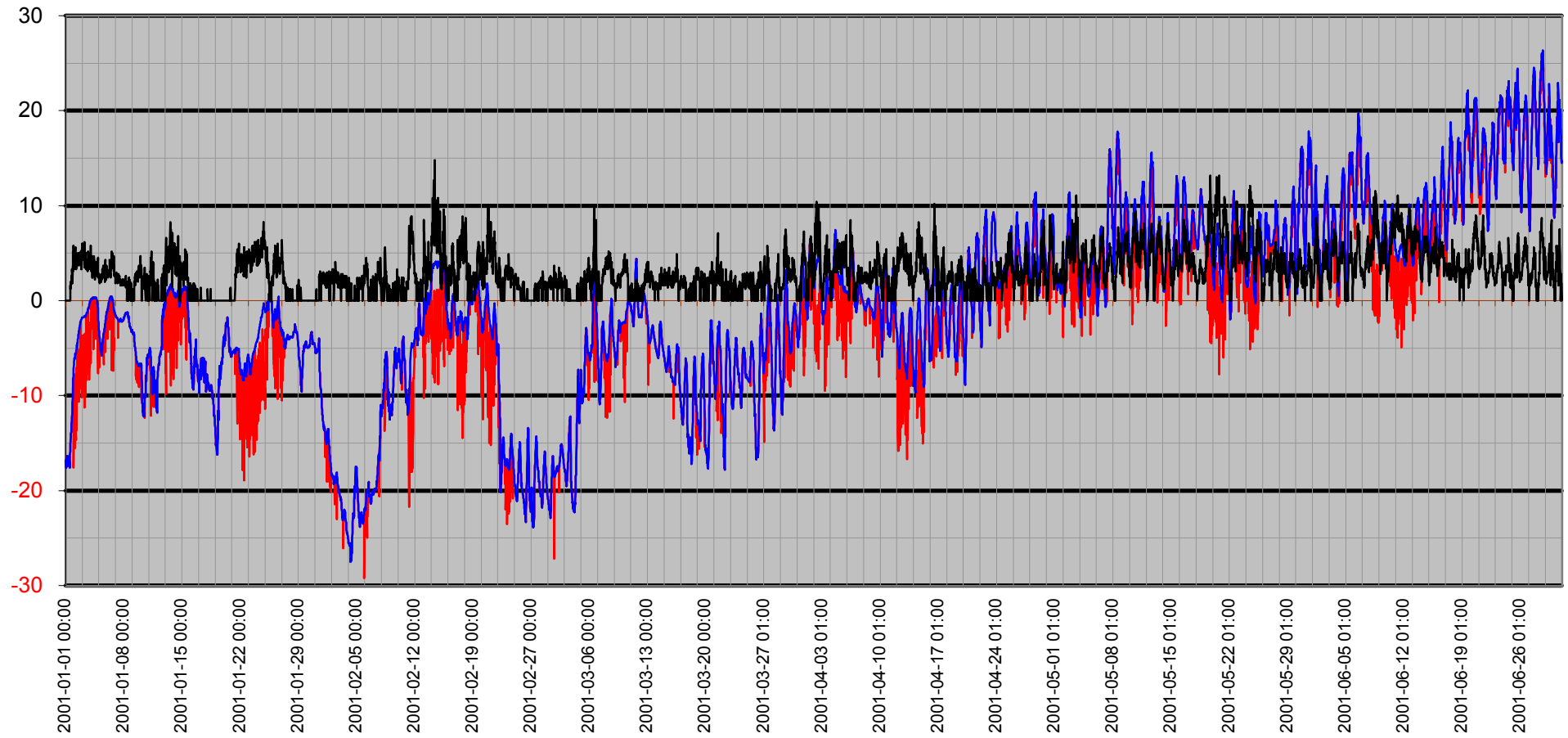
Dygnsmedeltemperatur

■ Vindkyl medel °C — Kyleffekt °C — Temperatur °C ● Dygnsmedel °C



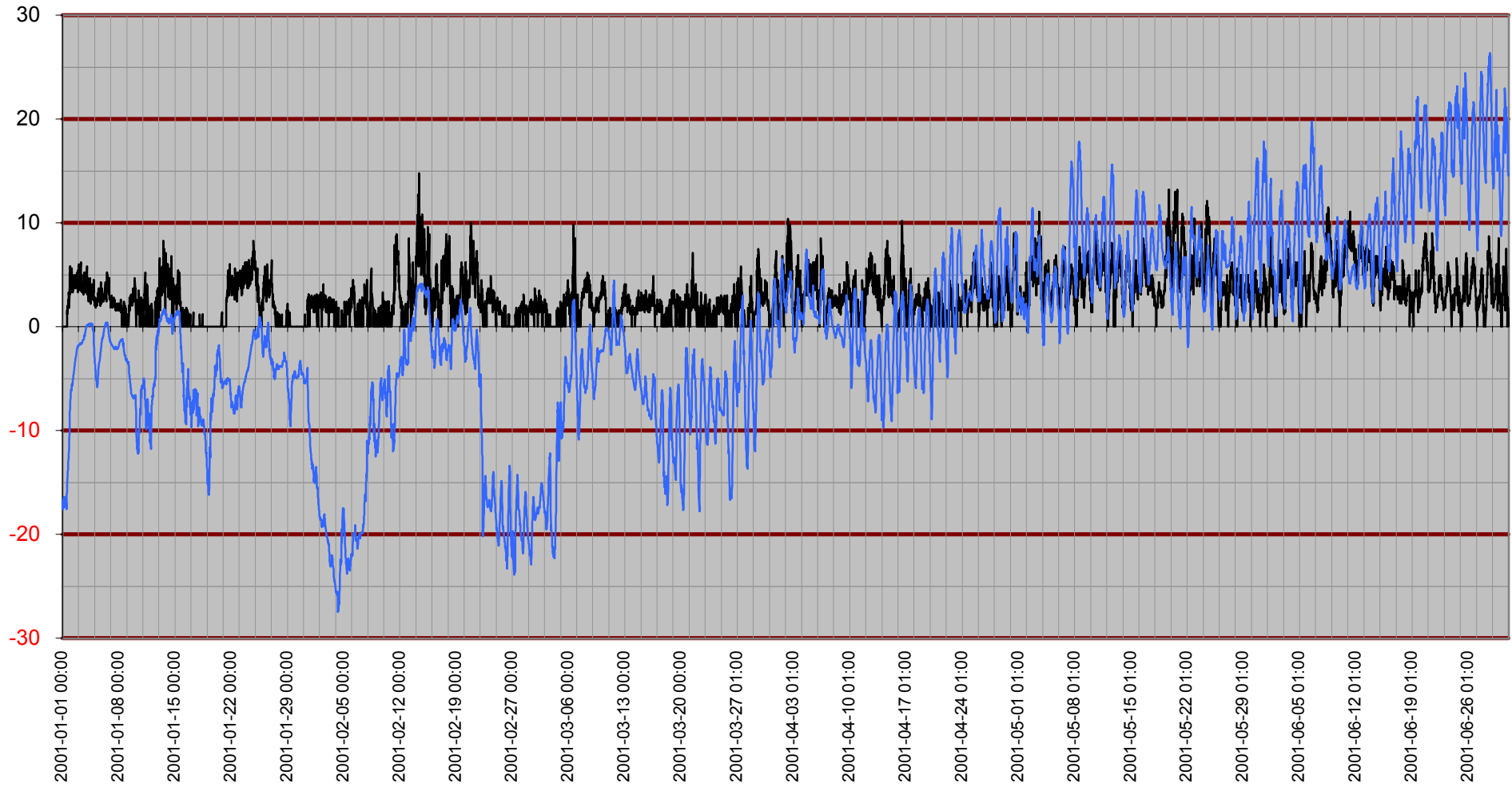
Grund

— Kyleffekt °C — Temp ute °C — Vindby m/s



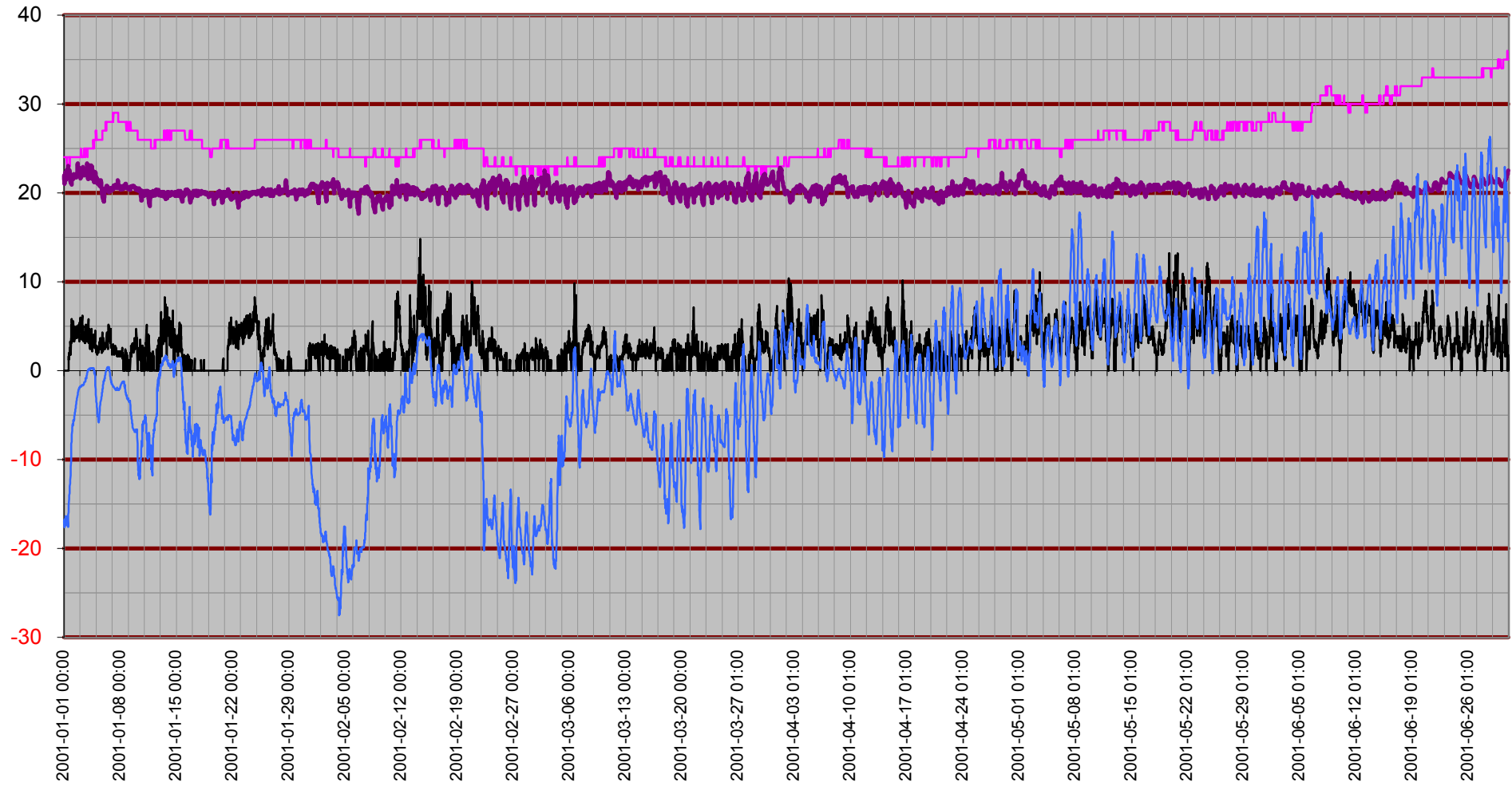
Temperatur/Vindby

— Vindby m/s — Temp ute °C



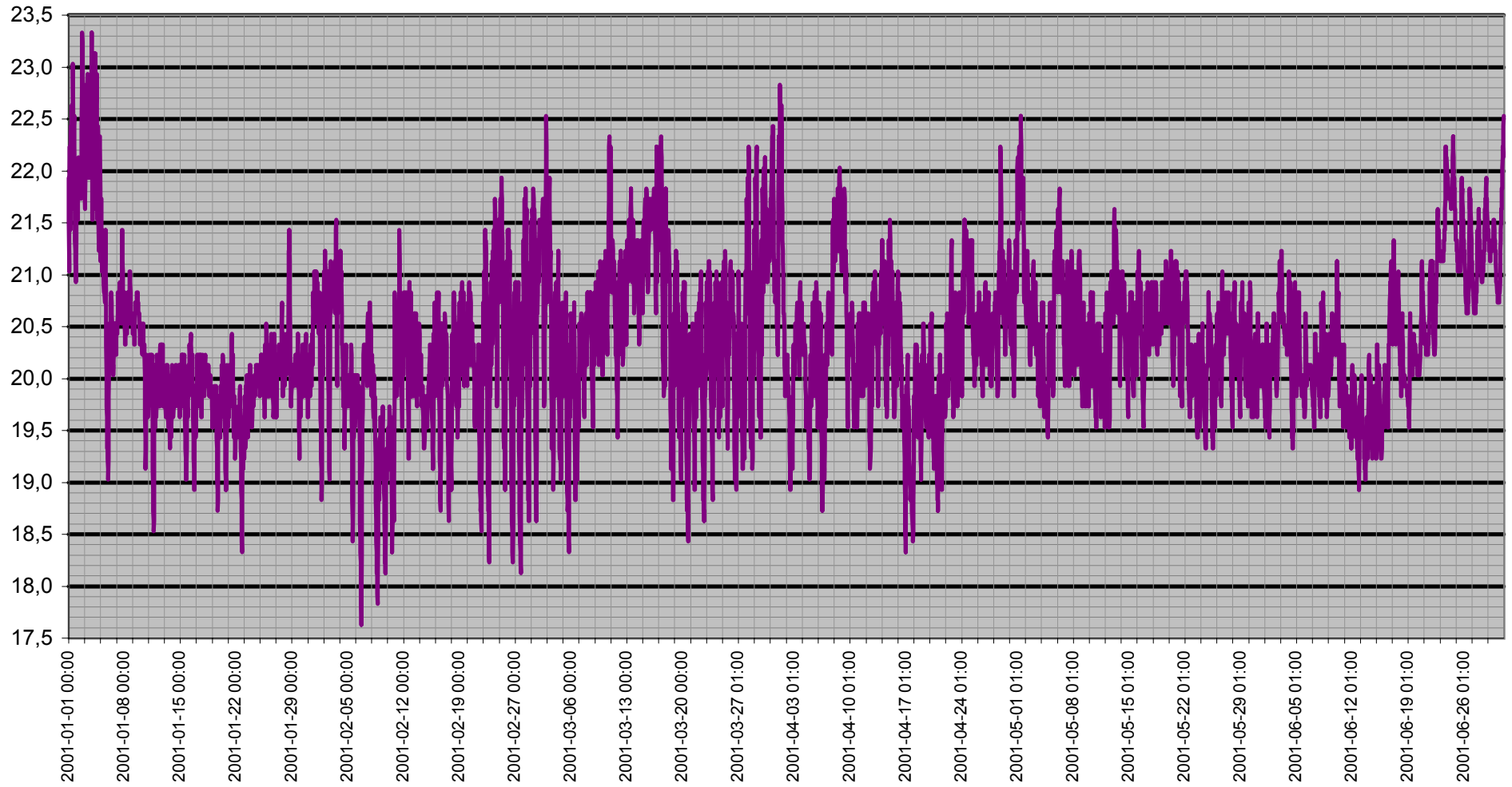
Inne

— Luffukt inne Rh% — Temp inne °C — Vindby m/s — Temp ute °C



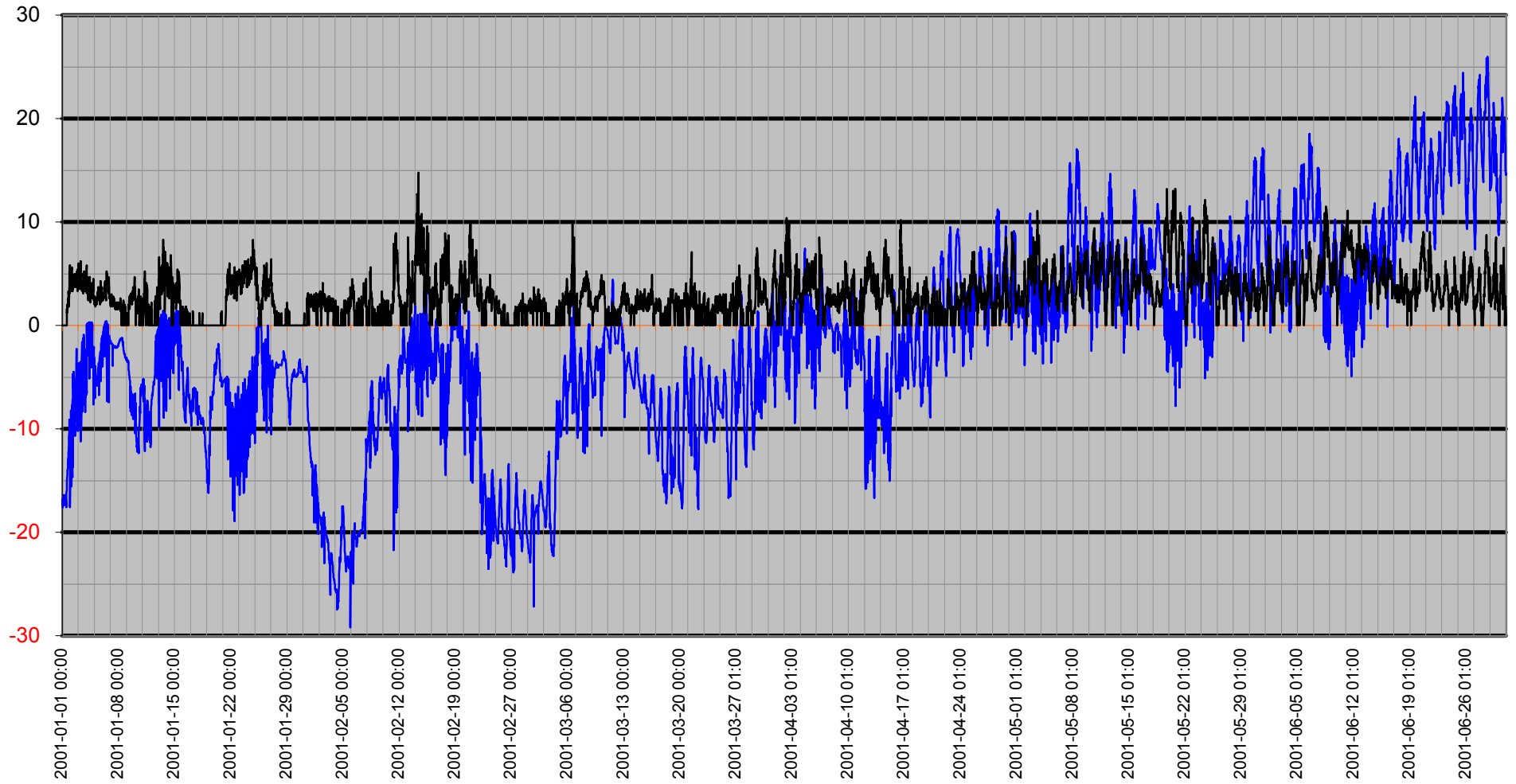
Temperatur

Temp inne °C

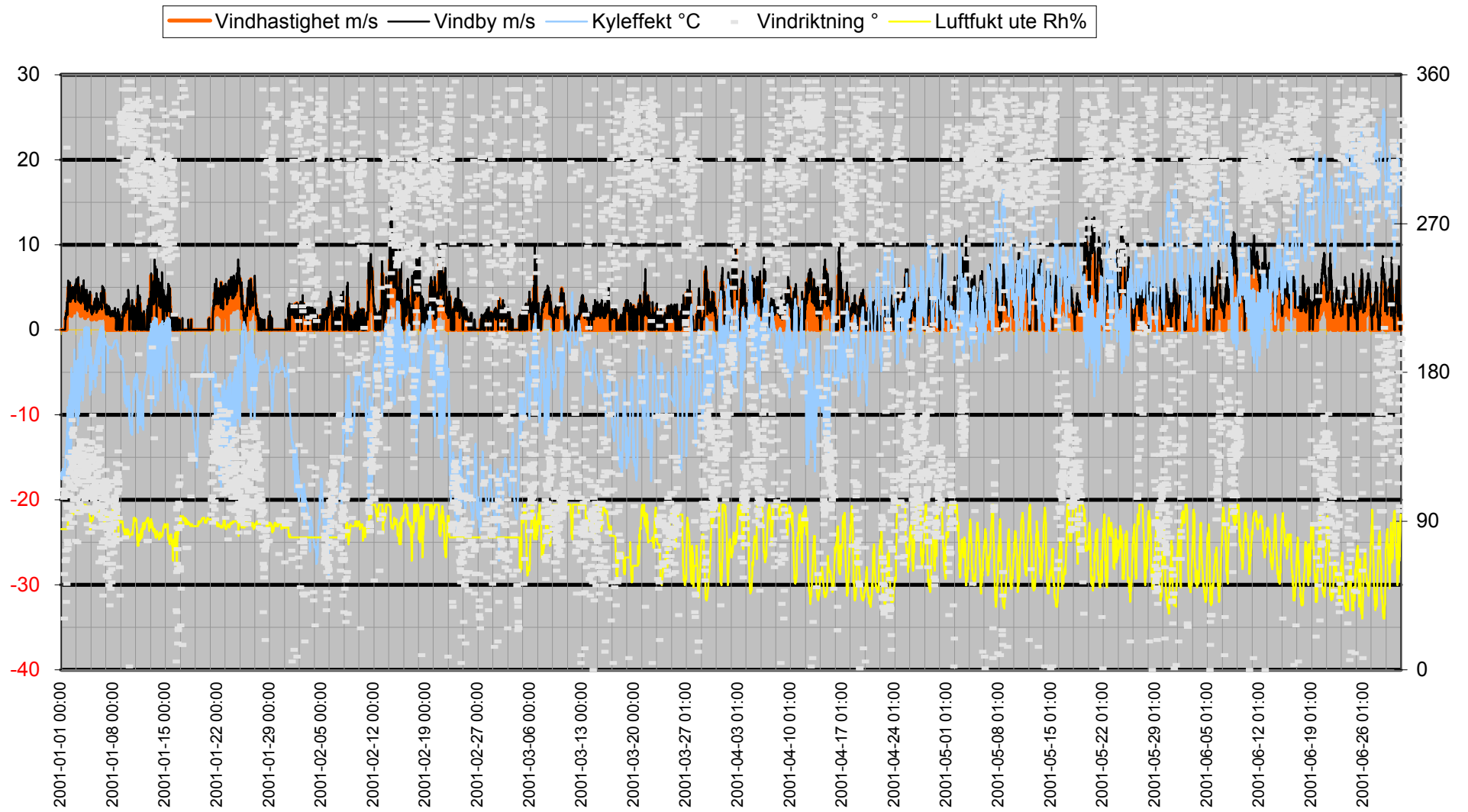


Vind

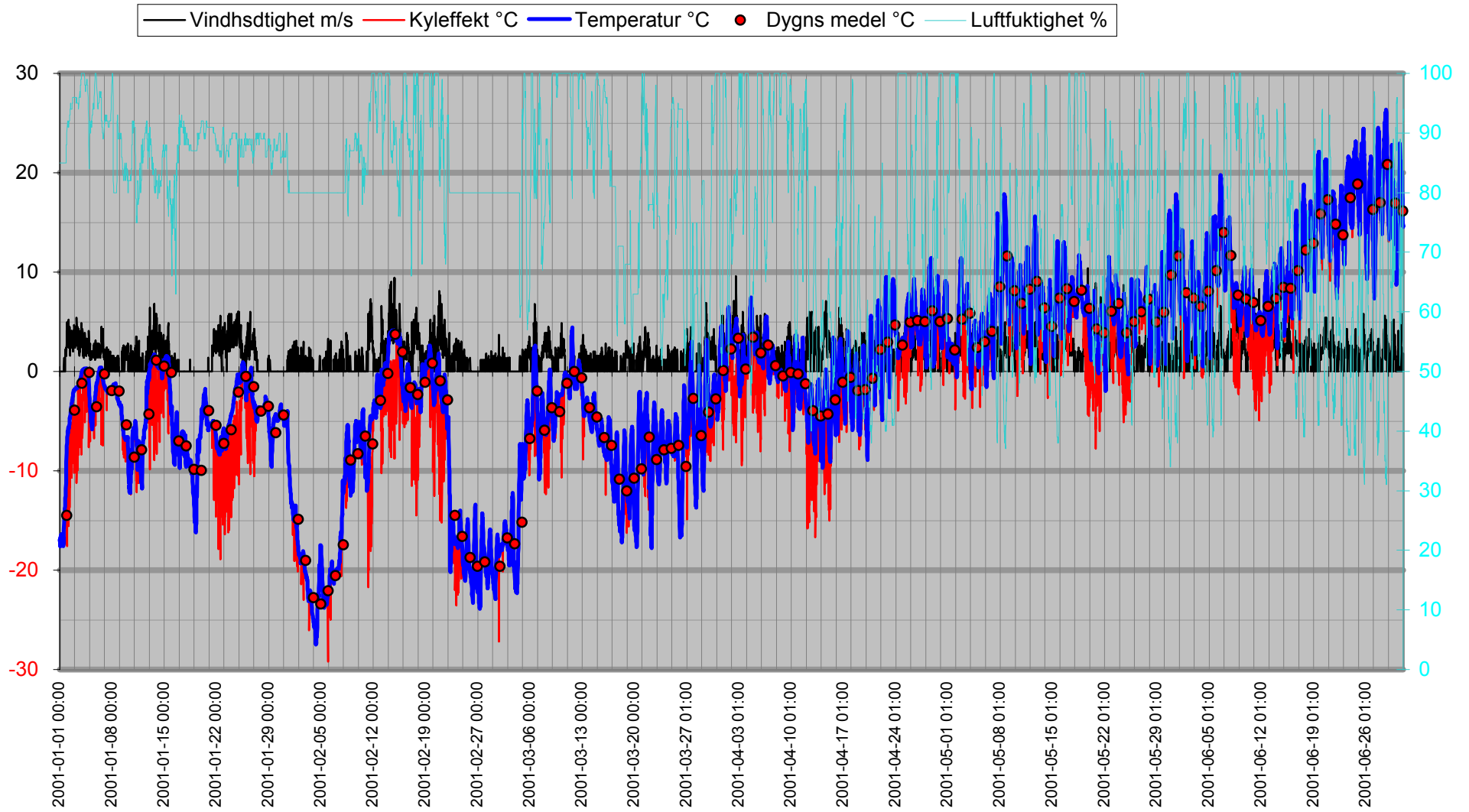
— Kyleffekt °C — Vindby m/s



Vinddata



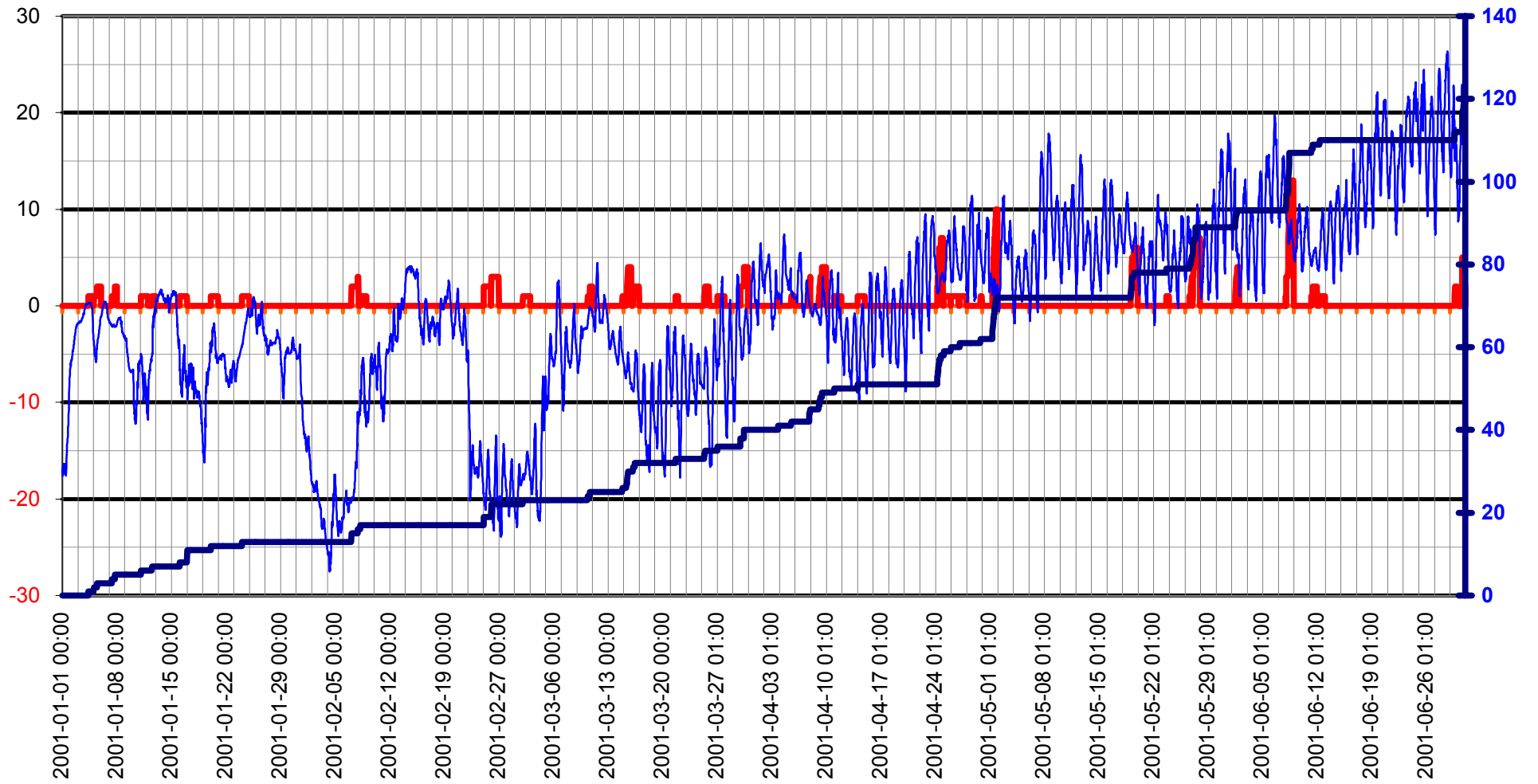
Luftfukt Kyleffekt Temp Vind Medel



Nederbörd

Dygnregn
Temp

Regn/dygn mm Temp ute °C Nederb. året mm



Luftryck

—◆— Luftryck mbar

