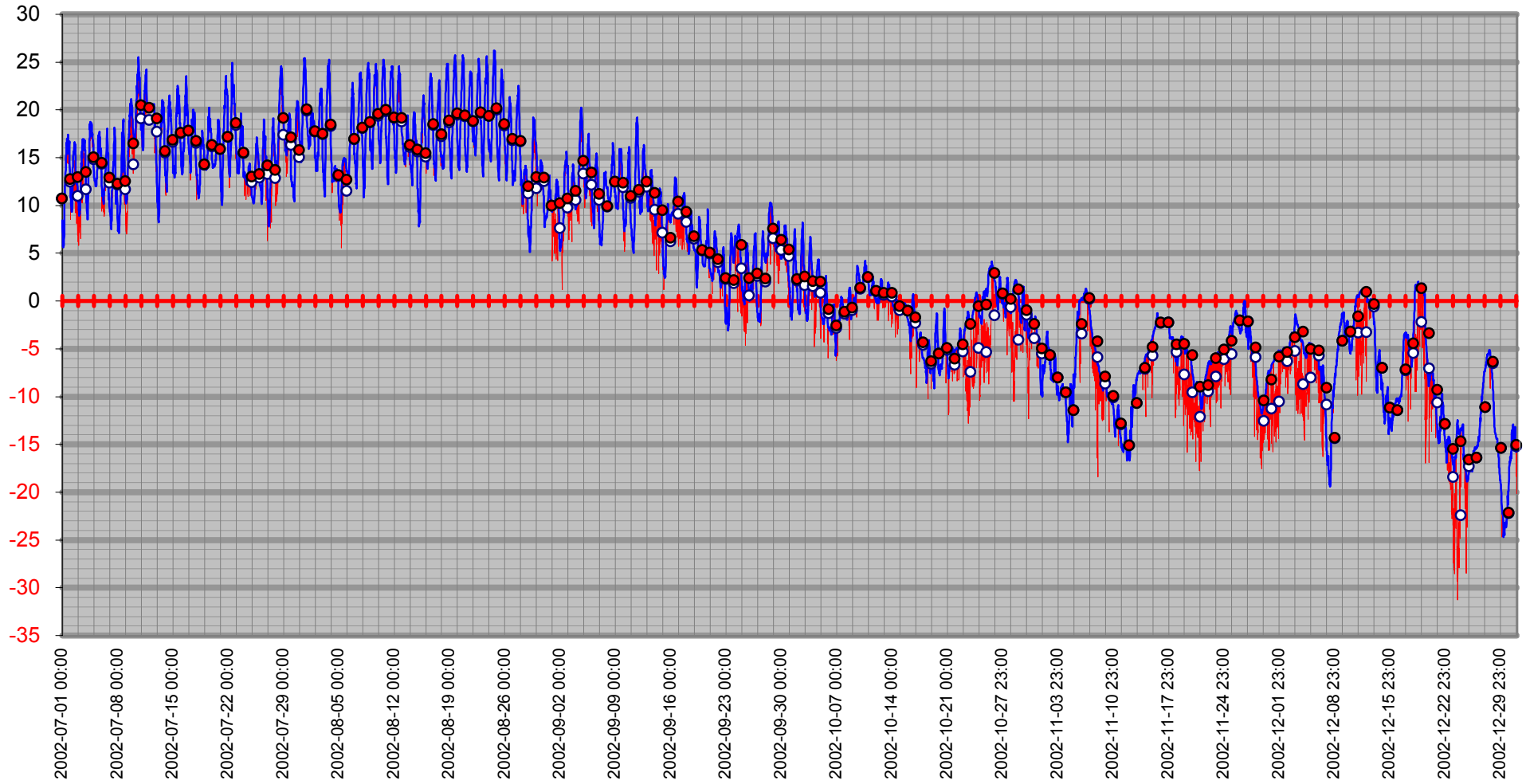


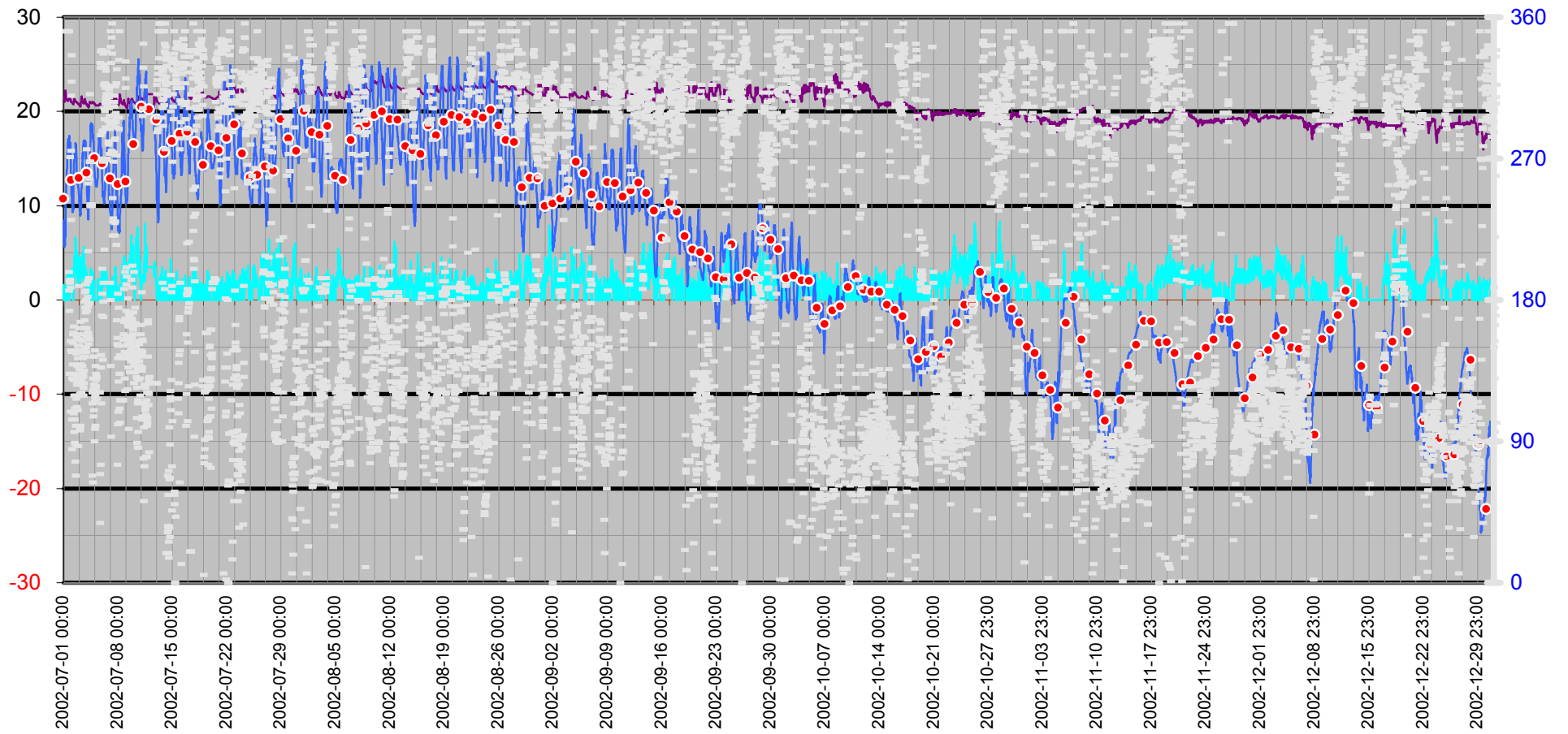
Dygnsmedeltemperatur

○ Vindkyl medel °C — Kyleffekt °C — Temperatur °C ● Dygnsmedel °C



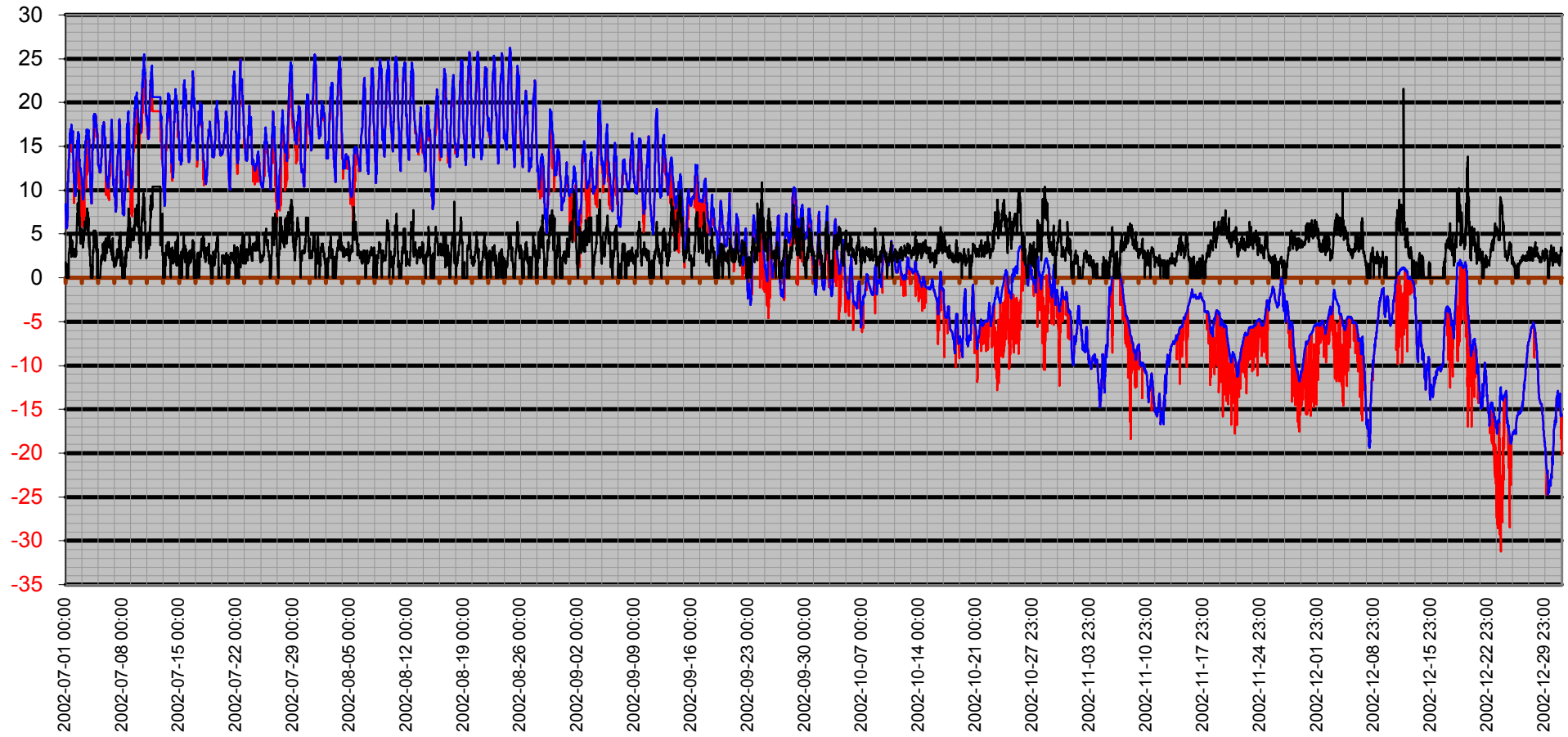
Temperatur/Vind

Vindhastighet m/s Temp inne °C Temp ute °C Dygns medel °C Vindriktning °



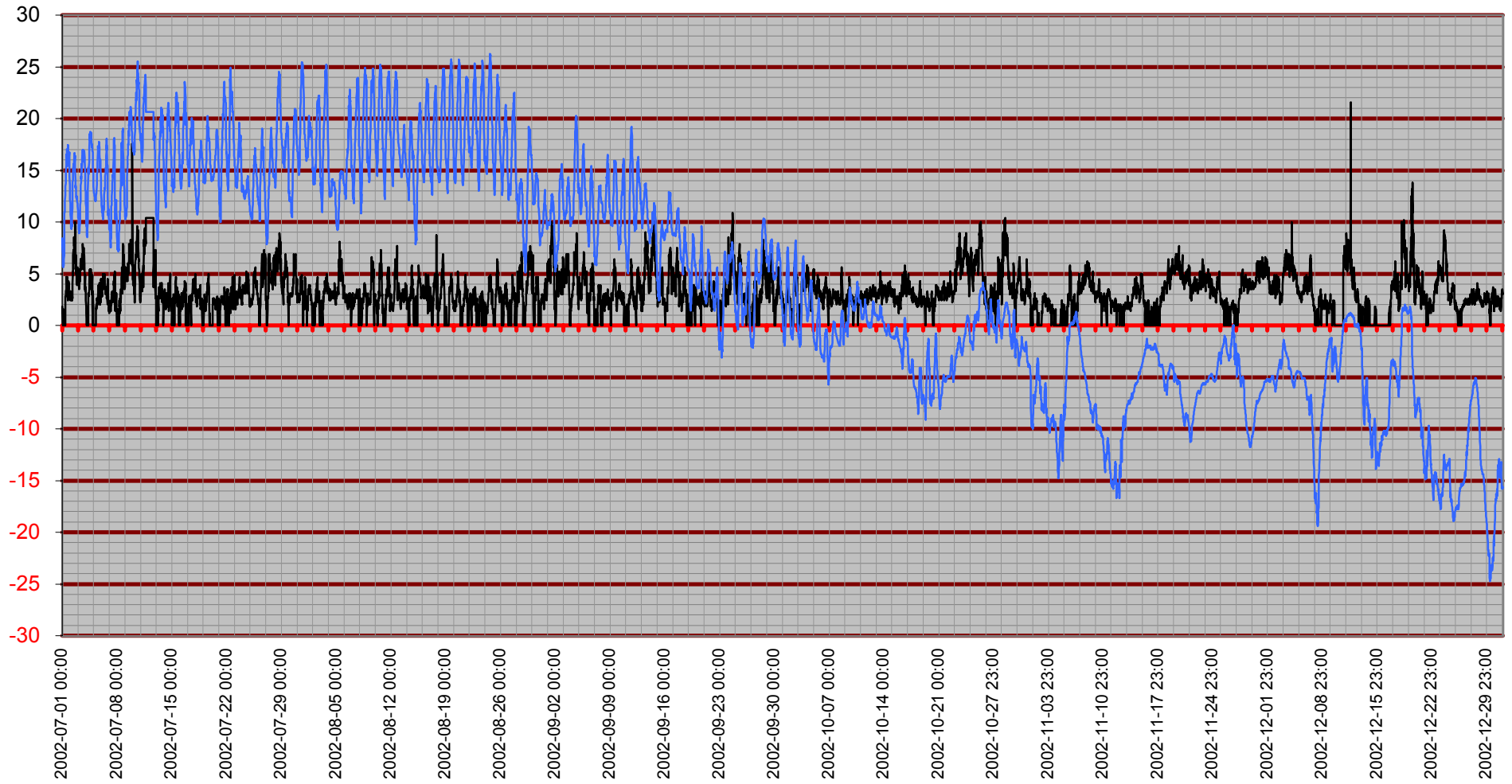
Vindby/Temp/Kyleffekt

— Kyleffekt °C — Temp ute °C — Vindby m/s



Temperatur/Vindby

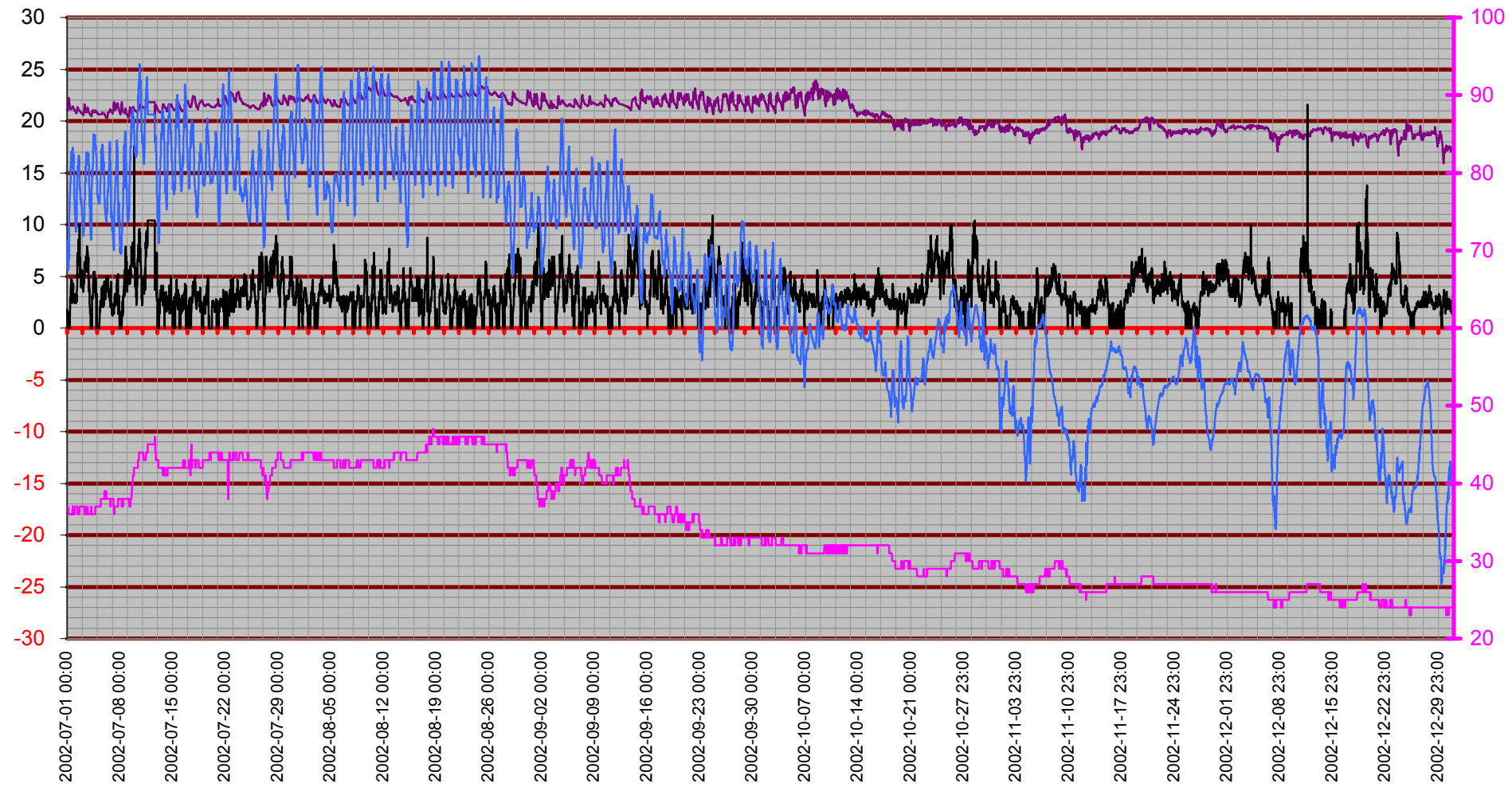
— Vindby m/s — Temp ute °C



Inne

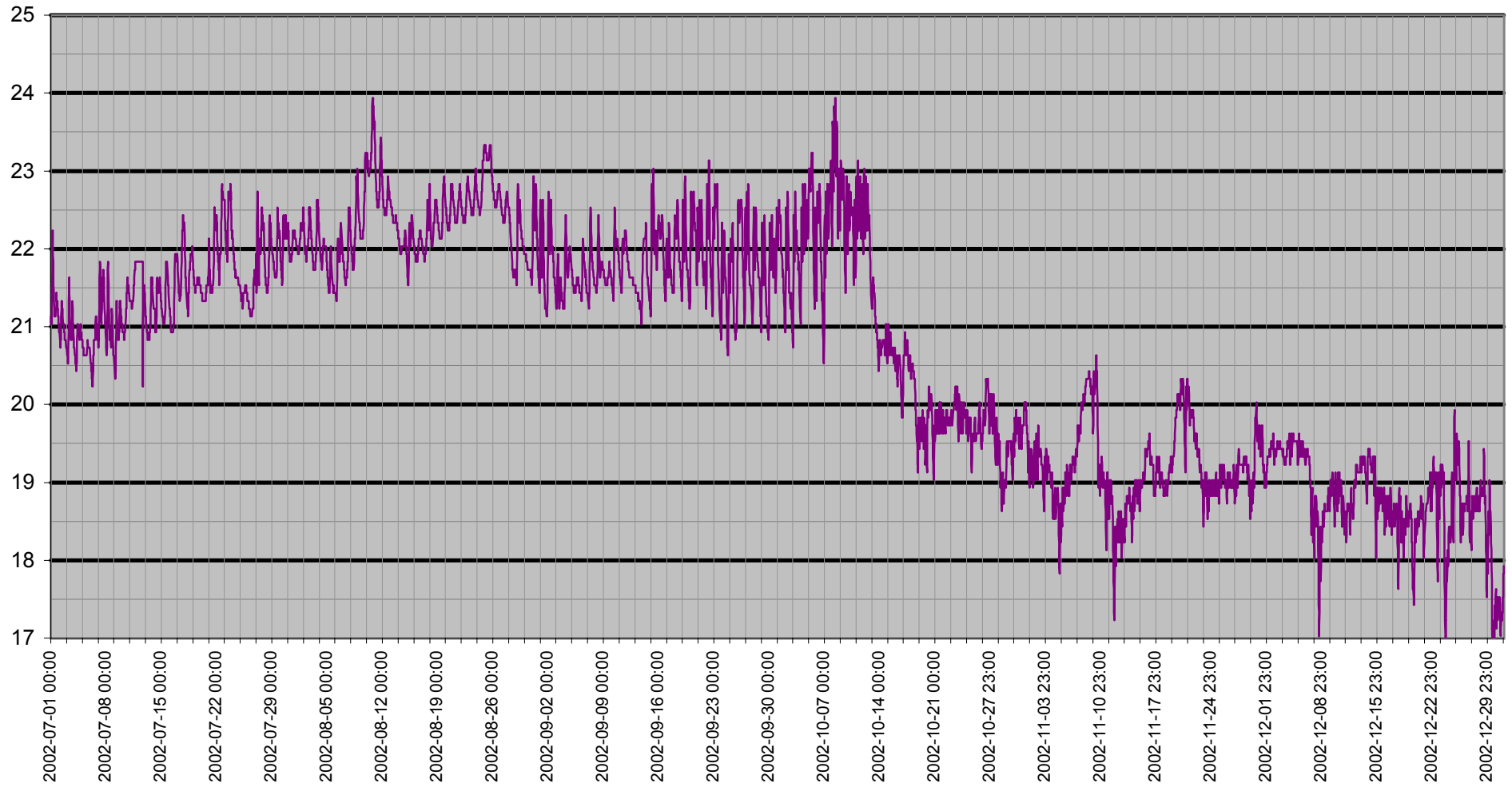
Temp inne °C Vindby m/s Temp ute °C Luftfukt inne Rh%

Luftfukt Rh
oz.



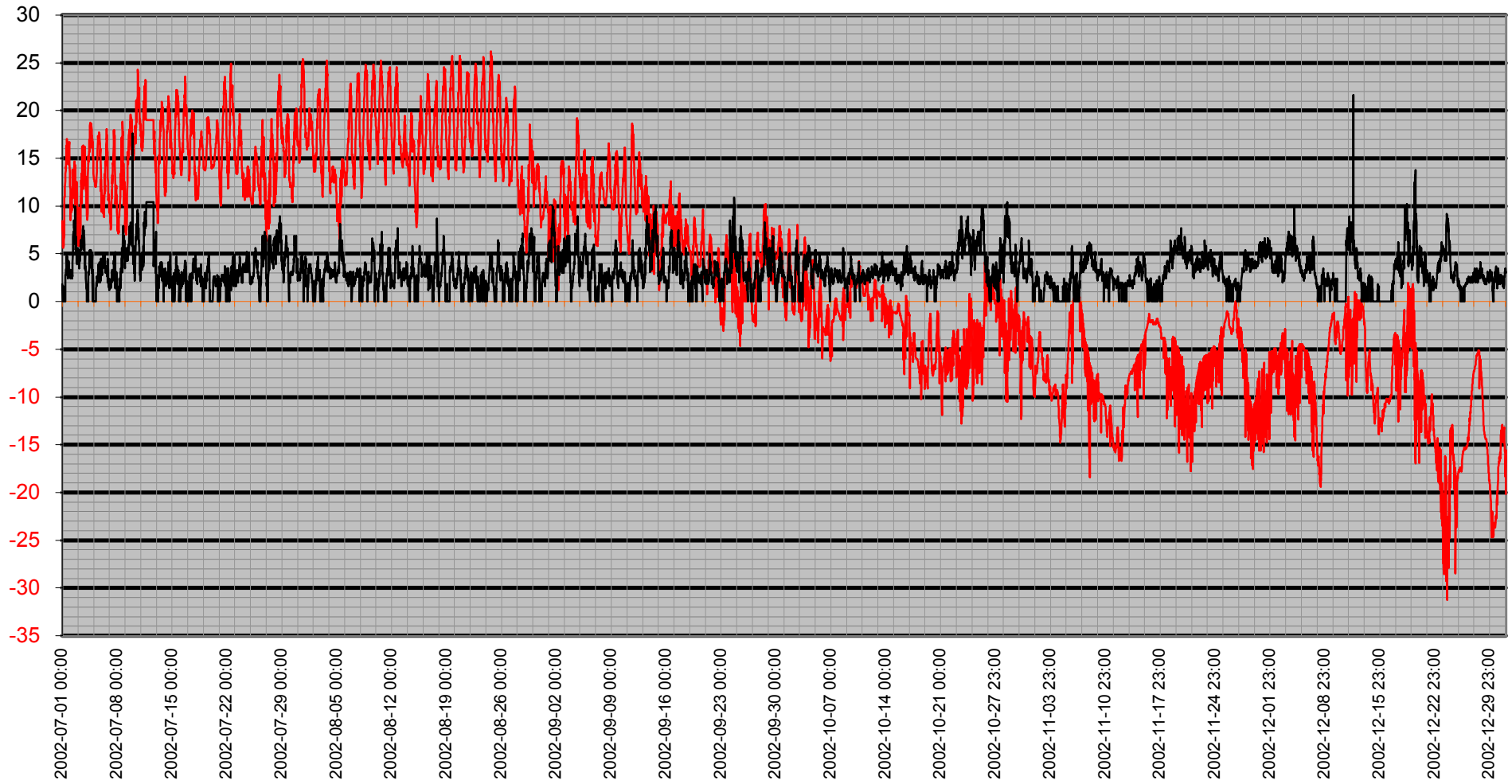
Temperatur Inne

Temp inne °C



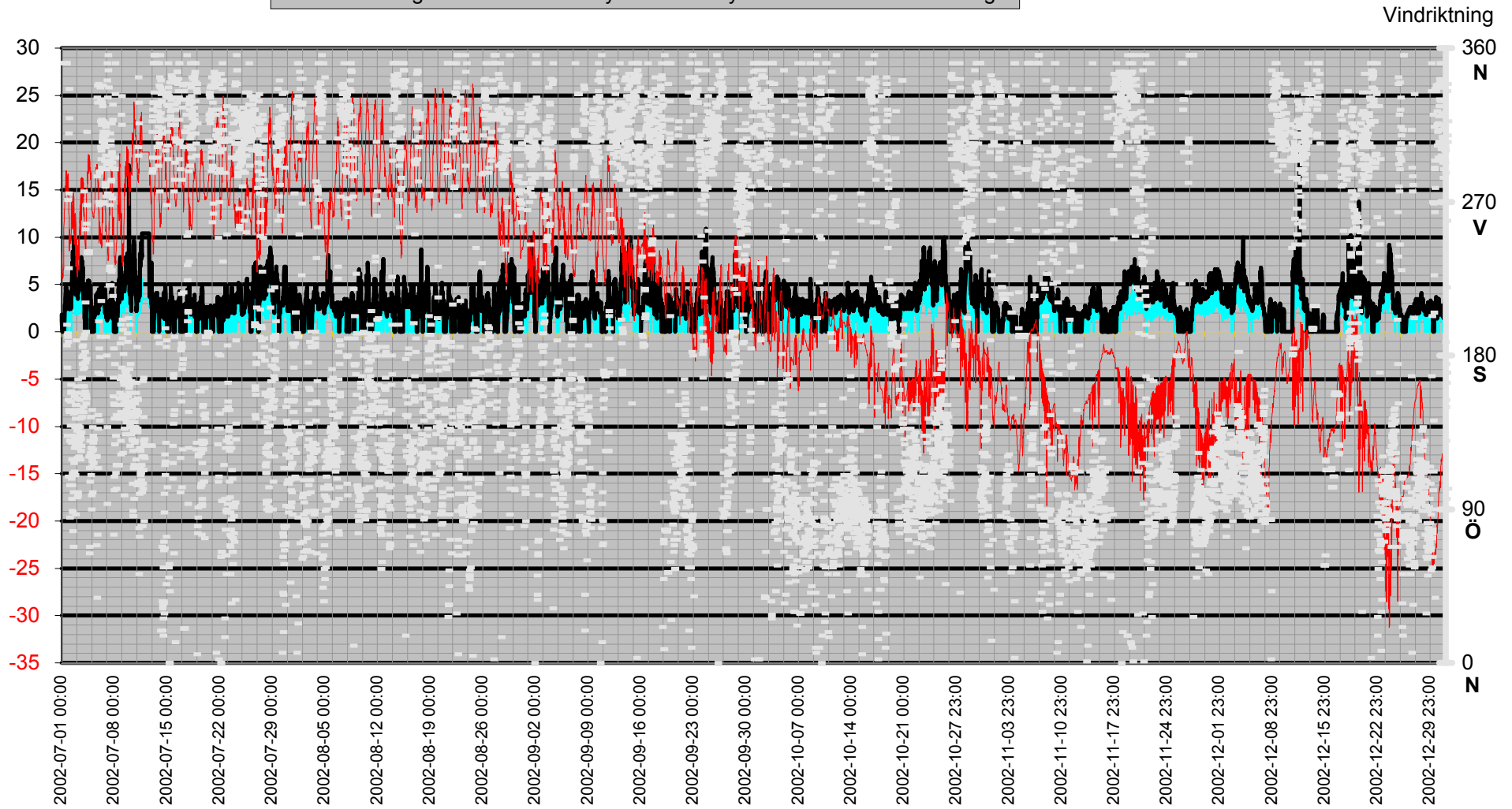
Vind

— Kyleffekt °C — Vindby m/s



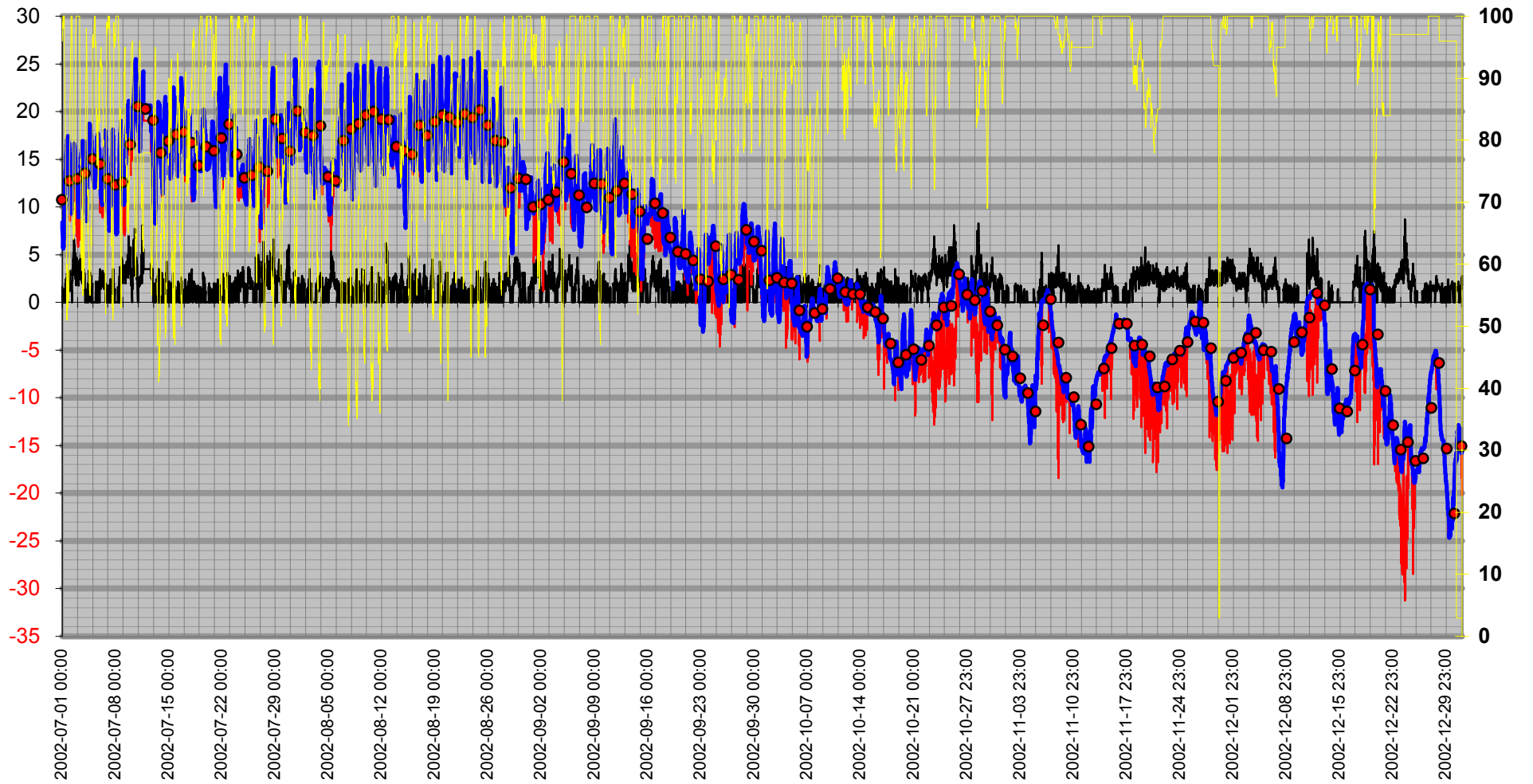
Vinddata

Vindhastighet m/s Vindby m/s Kyleffekt °C Vindriktning °



Luftfukt Kyleffekt Temp Vind Medel

— Vindhstighet m/s — Kyleffekt °C — Temperatur °C ● Dygns medel °C — Luftfuktighet %

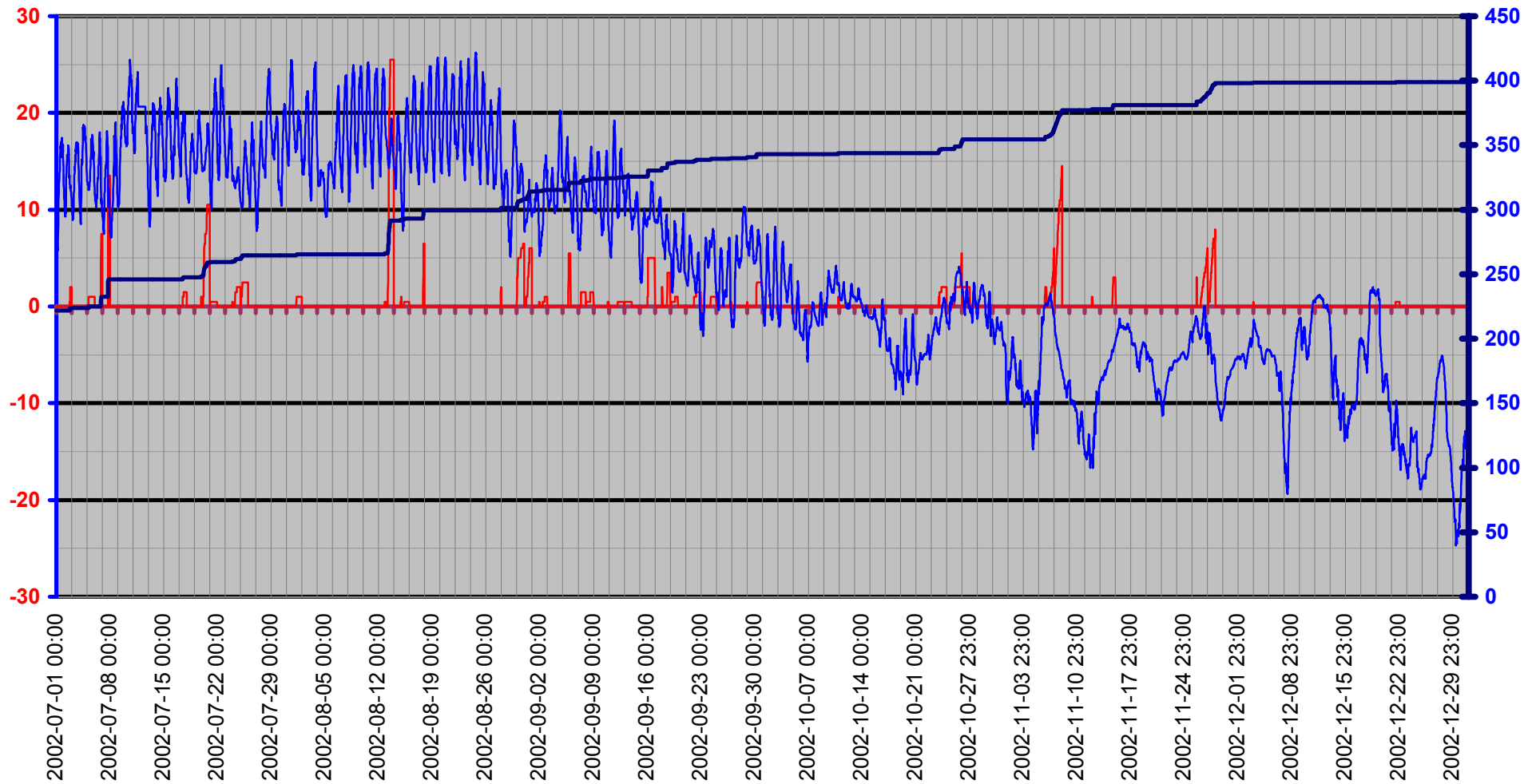


Nederbörd

Dygnsnederbörd
Temp

— Nederb./dygn mm — Temp ute °C — Regn Året mm

Årsnederb.



Luftryck

—◆— Luftryck mbar

